

Price List Industry 2025

Valid from 01.01.2025

Ex-Components

flexible • quality • customer-oriented



Quintex GmbH

i_Park Tauberfranken 19
97922 Lauda-Königshofen Germany
Phone: +49 9343 6130 0
E-Mail: info@quintex.info
www.quintex.eu



Proviso

We reserve the right to make technical changes. Changes, errors and literal errors do not justify any claim for damage compensation. For security components and systems, the relevant standards as well as the relevant operating and assembly instructions have to be followed.

This price list is replacing all former price lists. All prices es works, exclusive package and VAT.



Picture price list Ex-products valid from 01.01.2025

Prices



Type number

Description

QINGUARD Components

QINGUARD Controller 898,60 €
 QINGUARD Controller mounted in an DIN rail profile

QINGUARD Interface Modul 172,90 €
 QINGUARD Interface Module mounted in an DIN rail profile

QINGUARD Valve Modul 295,70 €
 QINGUARD Valve Modul mounted in an DIN rail profile



QINGUARD QMP (Controller mounted on mounting plate ready for connection)

QMP V1 AC 230 1.711,10 €
 QINGUARD Controller with Valvemodul and Interface, ready to connect
 QMP V2 1.563,40 €
 QINGUARD Controller with Valvemodul, ready to connect

QINGUARD DMP (Controller mounted on mounting plate ready for connection)

DMP CS 2.057,60 €
 Gas detector with passing sensor with power supply, ready to connect
 DMP IR 2.461,30 €
 Gas detector with infrared sensor with power supply, ready to connect



QINGUARD SPZ Enclosure series Zone 1/2 G/D (equipped with Power contactor SC)

SC4,5/11 146,60 €
 SC6,5/15 135,70 €
 SC9/19 254,70 €
 SC11/24 315,10 €
 SC13/30 291,70 €
 SC18/39 416,00 €
 SC22/48 482,70 €
 SC27/57 622,10 €
 SC33/69 1.072,90 €
 SC45/90 1.001,70 €
 SC54/102 1.628,50 €
 SC54/110 1.455,90 €
 SC66/135 1.395,00 €
 SC80/150 2.516,70 €
 SC96/180 2.892,10 €
 SC120/240 3.814,50 €
 SC150/300 5.475,20 €
 SC190/350 6.858,80 €
 SC213/390 9.155,80 €
 SC240/450 8.720,20 €
 SC270/500 9.933,00 €
 SC336/600 on request
 SC540/1000 on request

ATEX certified contactors for the direct use in overpressure enclosure



Linebushing with terminal block and cable gland, Ambient temperature -55°C...115°C, ATEX,

LBCON3-20030 113,20 €
 2x2,5mm², black, numbered, 1x2,5mm², green-yellow, gland- clamping range 7-13mm
 LBCON5-25030 221,60 €
 5x1,5mm², black, numbered, gland- clamping range 10-17mm
 LBCON8-25030 339,50 €
 1x Radox Railcat7 8xAWG24, 8x spring clamp terminal clamping range 0.08 - 2.5mm²

Picture price list Ex-products valid from 01.01.2025

Prices

Type number

Description



QX-P1
QX-P2
QX-P3
QX-P4
QX-P5
QX-P6
QX-P7
QX-P8
QX-P9
QX-P10
QX-P11
QX-P11H
QX-P12
QX-P12H
QX-P13
QX-P13H
QX-P15
QX-P15H

Ex Polyester empty enclosure, black, IP66 [LxWxH in mm]	
80x75x55	
110x75x55	
160x75x55	
190x75x55	
122x120x90	
220x120x90	
160x160x90	
260x160x90	
360x160x90	
200x250x120	
255x250x120	
255x250x160	
400x250x120	
400x250x160	
405x400x120	
405x400x200	
600x250x120	
600x250x160	

22,30 €
26,90 €
31,90 €
32,40 €
31,80 €
39,70 €
39,10 €
52,40 €
75,80 €
62,60 €
75,10 €
77,10 €
89,00 €
95,70 €
145,20 €
228,00 €
138,90 €
157,50 €



MP-P1
MP-P2
MP-P3
MP-P4
MP-P5
MP-P6
MP-P7
MP-P8
MP-P9
MP-P10
MP-P11
MP-P12
MP-P13
MP-P15

Mounting plate for	
QX-P1	
QX-P2	
QX-P3	
QX-P4	
QX-P5	
QX-P6	
QX-P7	
QX-P8	
QX-P9	
QX-P10	
QX-P11	
QX-P12	
QX-P13	
QX-P15	

3,00 €
3,60 €
4,00 €
4,50 €
4,80 €
5,90 €
6,70 €
7,90 €
8,90 €
9,60 €
11,50 €
13,80 €
15,40 €
16,70 €



QX-P5-1-1X1
QX-P5-2-2X1
QX-P6-3-3X1
QX-P6-4-4X1
QX-P6-4-2X2
QX-P8-6-3X2
QX-P8-9-3X3
QX-P9-8-4X2
QX-P10-9-3x3

Ex Local Control Station, polyester empty enclosure, black, IP66 [LxWxH in mm]	
122x120x90, 1 local control function	
122x120x90, up to 2 local control functions	
220x120x90, up to 3 local control functions	
220x120x90, up to 4 local control functions	
220x120x90, up to 4 local control functions	
260x160x90, up to 6 local control functions	
260x160x90, up to 9 local control functions	
360x160x90, up to 8 local control functions	
200x250x120, up to 9 local control functions	

49,80 €
57,10 €
74,10 €
83,70 €
84,90 €
118,90 €
140,90 €
139,90 €
150,50 €

Picture price list Ex-products valid from 01.01.2025

Prices

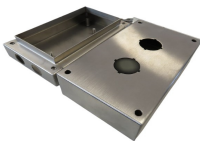
Type number

Description



Type number	Description
	Ex empty enclosure, stainless steel 316L, IP66 [LxWxH in mm]
QX-V1I	150x100x60
QX-V2I	150x150x80
QX-V3I	200x150x60
QX-V4I	200x200x80
QX-V5I	200x200x120
QX-V6I	200x200x160
QX-V7I	300x150x80
QX-V8I	300x200x80
QX-V9I	300x200x120
QX-V10I	300x200x200
QX-V11I	300x300x120
QX-V12I	300x300x160
QX-V13I	300x300x200
QX-V14I	380x380x160
QX-V15I	380x380x200
QX-V16I	400x150x80
QX-V17I	400x200x120
QX-V18I	400x200x160
QX-V19I	400x200x200
QX-V20I	400x300x160
QX-V21I	400x300x200
QX-V22I	500x300x160
QX-V23I	500x300x200
QX-V24I	500x400x160
QX-V25I	500x400x200
QX-V26I	600x200x120
QX-V27I	600x200x160
QX-V28I	600x200x200
QX-V29I	600x400x200
QX-V30I	600x600x200

on request




Type number	Description
	Ex Local Control Station, empty enclosure, stainless steel 316L, IP66 [LxWxH in mm]
QX-V1-1-1X1	150x100x60, 1 local control function
QX-V2-2-2X1	150x150x80, up to 2 local control functions
QX-V3-3-3X1	200x150x60, up to 3 local control functions
QX-V4I-4-2X2	200x200x80, up to 4 local control functions
QX-V5I-6-2X3	200x200x120, up to 6 local control functions
QX-V8I-6-3X2	300x200x80, up to 6 local control functions
QX-V8I-8-2X4	300x200x80, up to 8 local control functions
QX-V9I-9-3X3	300x200x120, up to 9 local control functions
QX-V9I-10-2X5	300x200x120, up to 9 local control functions
QX-V11I-12-3x4	300x300x120, up to 12 local control functions
QX-V11I-15-3x5	300x300x120, up to 15 local control functions

on request

Picture price list Ex-products valid from 01.01.2025

Prices

Type number	Description	
Ex local control functions, complete units		
Pushbutton, 2-pole, momentary-contact		
 QX-0201-P1 60	DIN-Rail mounting, 1NO/1NC	69,50 €
 QX-0201-P1 61	DIN-Rail mounting, 2NC	69,50 €
 QX-0201-P1 62	DIN-Rail mounting, 2NO	69,50 €
 QX-0201-P1 70	Panel mounting, 1NO/1NC	69,50 €
 QX-0201-P1 71	Panel mounting, 2NC	69,50 €
 QX-0201-P1 72	Panel mounting, 2NO	69,50 €
Double pushbutton, 2-pole, tactile		
 QX-0201-P2 60	DIN-Rail mounting, 1NO/1NC	80,70 €
 QX-0201-P2 61	DIN-Rail mounting, 2NC	80,70 €
 QX-0201-P2 62	DIN-Rail mounting, 2NO	80,70 €
 QX-0201-P2 70	Panel mounting, 1NO/1NC	80,70 €
 QX-0201-P2 71	Panel mounting, 2NC	80,70 €
 QX-0201-P2 72	Panel mounting, 2NO	80,70 €
Emergency stop, 2-pole, pull to unlock		
 QX-0201-P3 60	DIN-Rail mounting, 1NO/1NC	87,70 €
 QX-0201-P3 61	DIN-Rail mounting, 2NC	87,70 €
 QX-0201-P3 62	DIN-Rail mounting, 2NO	87,70 €
 QX-0201-P3 70	Panel mounting, 1NO/1NC	87,70 €
 QX-0201-P3 71	Panel mounting, 2NC	87,70 €
 QX-0201-P3 72	Panel mounting, 2NO	87,70 €
Emergency stop, 2-pole, turn to unlock, small head:		
 QX-0201-P6 60	DIN-Rail mounting, 1NO/1NC	97,10 €
 QX-0201-P6 61	DIN-Rail mounting, 2NC	97,10 €
 QX-0201-P6 62	DIN-Rail mounting, 2NO	97,10 €
 QX-0201-P6 70	Panel mounting, 1NO/1NC	97,10 €
 QX-0201-P6 71	Panel mounting, 2NC	97,10 €
 QX-0201-P6 72	Panel mounting, 2NO	97,10 €
Emergency stop, 2-pole, turn to unlock, large head		
 QX-0201-P7 60	DIN-Rail mounting, 1NO/1NC	108,40 €
 QX-0201-P7 61	DIN-Rail mounting, 2NC	108,40 €
 QX-0201-P7 62	DIN-Rail mounting, 2NO	108,40 €
 QX-0201-P7 70	Panel mounting, 1NO/1NC	108,40 €
 QX-0201-P7 71	Panel mounting, 2NC	108,40 €
 QX-0201-P7 72	Panel mounting, 2NO	108,40 €
Mushroom pushbutton, 2 pole, momentary		
 QX-0201-P4 60	DIN-Rail mounting, 1NO/1NC	84,90 €
 QX-0201-P4 61	DIN-Rail mounting, 2NC	84,90 €
 QX-0201-P4 62	DIN-Rail mounting, 2NO	84,90 €
 QX-0201-P4 70	Panel mounting, 1NO/1NC	84,90 €
QX-0201-P4 71	Panel mounting, 2NC	84,90 €
QX-0201-P4 72	Panel mounting, 2NO	84,90 €
Mushroom pushbutton red with key, 2-pole, latching		
QX-0201-Y0 60	DIN-Rail mounting, 1NO/1NC	113,20 €
QX-0201-Y0 61	DIN-Rail mounting, 2NC	113,20 €
QX-0201-Y0 62	DIN-Rail mounting, 2NO	113,20 €
QX-0201-Y0 70	Panel mounting, 1NO/1NC	113,20 €
QX-0201-Y0 71	Panel mounting, 2NC	113,20 €
QX-0201-Y0 72	Panel mounting, 2NO	113,20 €
Key switch, 2-pole, momentary/latching, 0-I		
QX-0201-Y6 60	DIN-Rail mounting, 1NO/1NC	113,20 €
QX-0201-Y6 61	DIN-Rail mounting, 2NC	113,20 €
QX-0201-Y6 62	DIN-Rail mounting, 2NO	113,20 €
QX-0201-Y6 70	Panel mounting, 1NO/1NC	113,20 €
QX-0201-Y6 71	Panel mounting, 2NC	113,20 €
QX-0201-Y6 72	Panel mounting, 2NO	113,20 €
Key switch, 2-pole, latching, I-0-II		
QX-0201-Y5 60	DIN-Rail mounting, 1NO/1NC	113,20 €
QX-0201-Y5 61	DIN-Rail mounting, 2NC	113,20 €
QX-0201-Y5 62	DIN-Rail mounting, 2NO	113,20 €
QX-0201-Y5 70	Panel mounting, 1NO/1NC	113,20 €
QX-0201-Y5 71	Panel mounting, 2NC	113,20 €
QX-0201-Y5 72	Panel mounting, 2NO	113,20 €
QX-0201-B1	Blind module	13,20 €

Picture price list Ex-products valid from 01.01.2025

Prices

Type number	Description	
Ex local control functions, complete units		
Position selector small, 2-pole		
	QX-0201-K46003	DIN-Rail mounting, 0-I-II, 1NO/1NC, spring-latched-spring
	QX-0201-K46204	DIN-Rail mounting, I-0-II, 2NO, spring-latched-spring
	QX-0201-K56204	DIN-Rail mounting, I-0-II, 2NO, latched
	QX-0201-K56003	DIN-Rail mounting, 0-I-II, 1NO/1NC, latched
	QX-0201-K66201	DIN-Rail mounting, 0-I, 2NO, latched
	QX-0201-K66002	DIN-Rail mounting, I-II, 1NO/1NC, latched
	QX-0201-K86005	DIN-Rail mounting, 0--II, 1NO/1NC, latched-latched-spring
	QX-0201-K47003	Panel mounting, 0-I-II, 1NO/1NC, spring-latched-spring
	QX-0201-K47204	Panel mounting, I-0-II, 2NO, spring-latched-spring
	QX-0201-K57204	Panel mounting, I-0-II, 2NO, latched
	QX-0201-K57003	Panel mounting, 0-I-II, 1NO/1NC, latched
	QX-0201-K67201	Panel mounting, 0-I, 2NO, latched
	QX-0201-K67002	Panel mounting, I-II, 1NO/1NC, latched
	QX-0201-K87005	Panel mounting, 0--II, 1NO/1NC, latched-latched-spring
Position selector large, 2-pole		
	QX-0201-S46003	DIN-Rail mounting, 1NO/1NC, spring-latched-spring
	QX-0201-S46204	DIN-Rail mounting, I-0-II, 2NO, spring-latched-spring
	QX-0201-S56204	DIN-Rail mounting, I-0-II, 2NO, latched
	QX-0201-S56003	DIN-Rail mounting, 0-I-II, 1NO/1NC, latched
	QX-0201-S66201	DIN-Rail mounting, 0-I, 2NO, latched
	QX-0201-S66002	DIN-Rail mounting, I-II, 1NO/1NC, latched
	QX-0201-S86005	DIN-Rail mounting, 0--II, 1NO/1NC, latched-latched-spring
	QX-0201-S47003	Panel mounting, 0-I-II, 1NO/1NC, spring-latched-spring
	QX-0201-S47204	Panel mounting, I-0-II, 2NO, spring-latched-spring
	QX-0201-S57204	Panel mounting, I-0-II, 2NO, latched
	QX-0201-S57003	Panel mounting, 0-I-II, 1NO/1NC, latched
	QX-0201-S67201	Panel mounting, 0-I, 2NO, latched
	QX-0201-S67002	Panel mounting, I-II, 1NO/1NC, latched
	QX-0201-S87005	Panel mounting, 0--II, 1NO/1NC, latched-latched-spring
Position selector large, 4-pole		
	QX-0201-S665201	DIN-Rail mounting, 0-I, 4NC, latched
	QX-0201-S665401	DIN-Rail mounting, 0-I, 1NO/3NC, latched
	QX-0201-S465204	DIN-Rail mounting, I-0-II, 4NO, spring-latched-spring
	QX-0201-S565204	DIN-Rail mounting, I-0-II, 4NO, latched
	QX-0201-S865204	DIN-Rail mounting, I-0-II, 4NO, latched-latched-spring
	QX-0201-S465003	DIN-Rail mounting, 0-I-II, 2NO/2NC, spring-latched-spring
	QX-0201-S565003	DIN-Rail mounting, 0-I-II, 2NO/2NC, latched
	QX-0201-S865005	DIN-Rail mounting, 0--I, 2NO/2NC, latched-latched-spring
	QX-0201-S675002	Panel mounting, I-II, 2NO/2NC, latched
	QX-0201-S675201	Panel mounting, 0-I, 4NO, latched
	QX-0201-S675401	Panel mounting, 0-I, 1NO/3NC, latched
	QX-0201-S475204	I-lid mounting, -0-II, 4NO, spring-latched-spring
	QX-0201-S575204	Panel mounting, I-0-II, 4NO, latched
	QX-0201-S875204	Panel mounting, I-0-II, 4NO, latched-latched-spring
	QX-0201-S475003	Panel mounting, 0-I-II, 2NO/2NC, spring-latched-spring
	QX-0201-S575003	Panel mounting, 0-I-II, 2NO/2NC, latched
	QX-0201-S875005	Panel mounting, 0--I, 2NO/2NC, latched-latched-spring
light module, 20-250V AC/DC		
	QX-0202-LB601	blue, DIN-Rail mounting
	QX-0202-LG601	green, DIN-Rail mounting
	QX-0202-LR601	red, DIN-Rail mounting
	QX-0202-LW601	white, DIN-Rail mounting
	QX-0202-LY601	yellow, DIN-Rail mounting
	QX-0202-LB701	blue, Panel mounting
	QX-0202-LG701	green, Panel mounting
	QX-0202-LR701	red, Panel mounting
	QX-0202-LW701	white, Panel mounting
	QX-0202-LY701	yellow, Panel mounting
Light module, 12-28V AC/DC		
	QX-0202-LB603	blue, DIN-Rail mounting
	QX-0202-LG603	green, DIN-Rail mounting
	QX-0202-LR603	red, DIN-Rail mounting
	QX-0202-LW603	white, DIN-Rail mounting
	QX-0202-LY603	yellow, DIN-Rail mounting
	QX-0202-LB703	blue, Panel mounting
	QX-0202-LG703	green, Panel mounting
	QX-0202-LR703	red, Panel mounting
	QX-0202-LW703	white, Panel mounting
	QX-0202-LY703	yellow, Panel mounting

Picture price list Ex-products valid from 01.01.2025

Prices

Type number	Description	
Ex local control functions, complete units		
Illuminated pushbutton, 20-250V AC/DC		
QX-0212-PB6301	blue, 1NC, DIN-Rail mounting	115,40 €
QX-0212-PG6301	green, 1NC, DIN-Rail mounting	115,40 €
QX-0212-PR6301	red, 1NC, DIN-Rail mounting	115,40 €
QX-0212-PW6301	white, 1NC, DIN-Rail mounting	115,40 €
QX-0212-PY6301	yellow, 1NC, DIN-Rail mounting	115,40 €
QX-0212-PB6401	blue, 1NO, DIN-Rail mounting	115,40 €
QX-0212-PG6401	green, 1NO, DIN-Rail mounting	115,40 €
QX-0212-PR6401	red, 1NO, DIN-Rail mounting	115,40 €
QX-0212-PW6401	white, 1NO, DIN-Rail mounting	115,40 €
QX-0212-PY6401	yellow, 1NO, DIN-Rail mounting	115,40 €
QX-0212-PB7301	blue, 1NC, Panel mounting	115,40 €
QX-0212-PG7301	green, 1NC, Panel mounting	115,40 €
QX-0212-PR7301	red, 1NC, Panel mounting	115,40 €
QX-0212-PW7301	white, 1NC, Panel mounting	115,40 €
QX-0212-PY7301	yellow, 1NC, Panel mounting	115,40 €
QX-0212-PB7401	blue, 1NO, Panel mounting	115,40 €
QX-0212-PG7401	green, 1NO, Panel mounting	115,40 €
QX-0212-PR7401	red, 1NO, Panel mounting	115,40 €
QX-0212-PW7401	white, 1NO, Panel mounting	115,40 €
QX-0212-PY7401	yellow, 1NO, Panel mounting	115,40 €
Illuminated pushbutton, 12-28V AC/DC		
QX-0212-PB6303	blue, 1NC, DIN-Rail mounting	118,10 €
QX-0212-PG6303	green, 1NC, DIN-Rail mounting	118,10 €
QX-0212-PR6303	red, 1NC, DIN-Rail mounting	118,10 €
QX-0212-PW6303	white, 1NC, DIN-Rail mounting	118,10 €
QX-0212-PY6303	yellow, 1NC, DIN-Rail mounting	118,10 €
QX-0212-PB6403	blue, 1NO, DIN-Rail mounting	118,10 €
QX-0212-PG6403	green, 1NO, DIN-Rail mounting	118,10 €
QX-0212-PR6403	red, 1NO, DIN-Rail mounting	118,10 €
QX-0212-PW6403	white, 1NO, DIN-Rail mounting	118,10 €
QX-0212-PY6403	yellow, 1NO, DIN-Rail mounting	118,10 €
QX-0212-PB7303	blue, 1NC, Panel mounting	118,10 €
QX-0212-PG7303	green, 1NC, Panel mounting	118,10 €
QX-0212-PR7303	red, 1NC, Panel mounting	118,10 €
QX-0212-PW7303	white, 1NC, Panel mounting	118,10 €
QX-0212-PY7303	yellow, 1NC, Panel mounting	118,10 €
QX-0212-PB7403	blue, 1NO, Panel mounting	118,10 €
QX-0212-PG7403	green, 1NO, Panel mounting	118,10 €
QX-0212-PR7403	red, 1NO, Panel mounting	118,10 €
QX-0212-PW7403	white, 1NO, Panel mounting	118,10 €
QX-0212-PY7403	yellow, 1NO, Panel mounting	118,10 €
QX-0203-DWxyy	Potentiometer module x: 6: DIN-Rail mounting, 7: Panel mounting yy: 1: 100Ω, 2: 200Ω, 3: 500Ω, 4: 1KΩ, 5: 2KΩ, 6: 5KΩ, 7: 10KΩ, 8: 20KΩ, 9: 50KΩ, 10: 100KΩ, 11: 200KΩ, 12: 500KΩ, 13: 1MΩ, 14: 2MΩ	169,50 €
QX-0205-EXM	Window for Ampere- / Voltmeter	16,30 €
QX-0205-6WA	Holder for DIN-Rail mounting	11,00 €
QX-0205-7WA	Holder for Panel mounting	11,00 €
QX-0205-DA xx	Amperemeter for direct measurement, Overload factor x2 1: 0-1/2A, 4: 0-4/8A, 5: 0-5/10A, 10: 0-10/20A, 15: 0-15/30A	78,70 €
QX-0205-WA xxx / y-z	Amperemeter for current transformer xxx: Measuring range 01: 0-1/2(5)A, 2.5: 0-2.5/5(12,5)A, 5: 0-5/10(25)A, 15: 0-15/30(75)A, 25: 0-25/50(125)A, 40: 0-40/80(200)A, 50: 0-50/100(250)A, 60: 0-60/120(300)A, 75: 0-75/150(375)A, 100: 0-100/200(500)A, 150: 0-150/300(750)A, 200: 0-200/400(1000)A, 250: 0-250/500(1250)A, 300: 0-300/600(1500)A, 400: 0-400/800(2000)A, 500: 0-500/1000(2500)A, 600: 0-600/1200(3000)A y: Current transformer in Ampere 1 or 5	78,70 €
QX-0205-mA11	Amperemeter for direct measurement 0-20/40mA	191,70 €
QX-0205-mA12	Amperemeter for direct measurement 4-20/40mA	191,70 €
QX-0205-V xxx	Voltmeter 25: 0-25V, 40: 0-40V, 150: 0-150V, 250: 0-250V, 500: 0-500V	191,70 €

Picture price list Ex-products valid from 01.01.2025

Prices

Type number

Description



Ex local control functions, utility

QX-02/4031/1	Labelholder small	7,80 €
QX-02/4031/4	Labelholder large	7,80 €
QX-02/4003/1	Yellow label round for emergency stop	1,90 €
QX-02/4003/2	Yellow label rectangle for emergency stop	1,90 €
QX-02/2009-25	Hanger assembly	4,90 €
QX-02/4019/1-7	Safety catch with clear lid	49,00 €
QX-02/4019/2	Safety catch, shroud for emergency stop	26,40 €
QX-02/4019/2+9	Safety catch, shroud for emergency stop with bow and U-Lock	31,50 €
QX-02/4019/3-7	Protection flap for pushbutton, suitable for U-Lock	37,40 €
QX-02/4006	Fixing tool	16,20 €
QX-02/4008/1	Earth plate brass, 1xM20	13,70 €
QX-02/4008/2	Earth plate brass, 1xM25	13,70 €
QX-02/4008/3	Earth plate brass, 1xM32	20,70 €
QX-02/4008/4	Earth plate brass, 2xM25	20,70 €
QX-02/4008/5	Earth plate brass, 2xM20	20,70 €

Ex Signal Tower



24V AC/DC		
ST-1-R	1 Module, red	654,00 €
ST-1-G-R	2 Modules, green, red	730,90 €
ST-1-G-O-R	3 Modules, green, orange, red	807,90 €
ST-1-B-G-O-R	4 Modules, blue, green, orange red	884,70 €
ST-1-B-Y-G-O-R	5 Modules, blue, yellow, green, orange, red	1.019,40 €
230V AC/DC		
ST-2-R	1 Module, red	654,00 €
ST-2-G-R	2 Modules, green, red	730,90 €
ST-2-G-O-R	3 Modules, green, orange, red	807,90 €
ST-2-B-G-O-R	4 Modules, blue, green, orange red	884,70 €
ST-2-B-Y-G-O-R	5 Modules, blue, yellow, green, orange, red	1.019,40 €

Ex Emergency Exit Lamp



EL-EXIT-D-1-10	with battery and line bushing, 10m Ölflex cable 3G0,75 - Arrow down	1.350,70 €
EL-EXIT-R-1-10	with battery and line bushing, 10m Ölflex cable 3G0,75 - Arrow right	1.350,70 €
EL-EXIT-L-1-10	with battery and line bushing, 10m Ölflex cable 3G0,75 - Arrow left	1.350,70 €
EL-EXIT-U-1-10	with battery and line bushing, 10m Ölflex cable 3G0,75 - Arrow up	1.350,70 €
EL-EXIT-D-2-10	without battery for central supply, incl. line bushing, 10m Ölflex cable 3G0,75 - Arrow down	1.279,00 €
EL-EXIT-R-2-10	without battery for central supply, incl. line bushing, 10m Ölflex cable 3G0,75 - Arrow right	1.279,00 €
EL-EXIT-L-2-10	without battery for central supply, incl. line bushing, 10m Ölflex cable 3G0,75 - Arrow left	1.279,00 €
EL-EXIT-U-2-10	without battery for central supply, incl. line bushing, 10m Ölflex cable 3G0,75 - Arrow up	1.279,00 €
EL-EXIT-D-1-0	with battery and cable gland M20 3,2-8,7mm - Arrow down	1.350,70 €
EL-EXIT-R-1-0	with battery and cable gland M20 3,2-8,7mm - Arrow right	1.350,70 €
EL-EXIT-L-1-0	with battery and cable gland M20 3,2-8,7mm - Arrow left	1.350,70 €
EL-EXIT-U-1-0	with battery and cable gland M20 3,2-8,7mm - Arrow up	1.350,70 €
EL-EXIT-D-2-0	without battery for central supply, with cable gland M20 3,2-8,7mm - Arrow down	1.279,00 €
EL-EXIT-R-2-0	without battery for central supply, with cable gland M20 3,2-8,7mm - Arrow right	1.279,00 €
EL-EXIT-L-2-0	without battery for central supply, with cable gland M20 3,2-8,7mm - Arrow left	1.279,00 €
EL-EXIT-U-2-0	without battery for central supply, with cable gland M20 3,2-8,7mm - Arrow up	1.279,00 €



Ex Escape Lighting



EL-WAY-0-1-10	with battery and line bushing, 10m Ölflex cable 3G0,75 - not switchable	1.424,40 €
EL-WAY-S-1-10	with battery and line bushing, 10m Ölflex cable 4G0,75 - switchable	1.427,50 €
EL-WAY-0-2-10	without battery for central supply, incl. line bushing, 10m Ölflex cable 3G0,75 - not switchable	1.263,60 €
EL-WAY-S-2-10	without battery for central supply, incl. line bushing, 10m Ölflex cable 4G0,75 - switchable	1.266,70 €
EL-WAY-0-1-0	with battery and cable gland M20 3,2-8,7mm - not switchable	1.424,40 €
EL-WAY-S-1-0	with battery and cable gland M20 3,2-8,7mm - switchable	1.427,50 €
EL-WAY-0-2-0	without battery for central supply, with cable gland M20 3,2-8,7mm - not switchable	1.263,60 €
EL-WAY-S-2-0	without battery for central supply, with cable gland M20 3,2-8,7mm - switchable	1.266,70 €



Picture price list Ex-products valid from 01.01.2025

Prices

Type number

Description



QX-VISUEX-3P

Ex LED-Matrix Display
Explosion-proof, flameproof LED matrix, 191 x 150 x 740mm

1.238,00 €



WIREX-Tower

Ex-Accesspoints
Tower Version

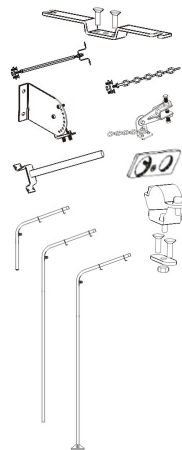
1.258,50 €



LED-0865 1x30W1-B
LED-0865 1x30W2-B
LED-0865 1x30W1-YJ-B
LED-0865 1x30W2-YJ-B
LED-0866 2x30W1-B
LED-0866 2x30W2-B
LED-0866 2x30W1-YJ-B
LED-0866 2x30W2-YJ-B

LED Ex light fittings
LED light fitting 1x30W, without Diffusor
LED light fitting 1x30W, with Diffusor
LED light fitting 1x30W, with emergency illumination, without diffusor
LED light fitting 1x30W, with emergency illumination, with diffusor
LED light fitting 2x30W, without Diffusor
LED light fitting 2x30W, with Diffusor
LED light fitting 2x30W, with emergency illumination, without diffusor
LED light fitting 2x30W, with emergency illumination, with diffusor

475,10 €
481,30 €
696,30 €
702,50 €
653,30 €
670,70 €
892,90 €
911,40 €



FL-08/D621
FL-08/D621/304
FL-08/D622
FL-08/D623
FL-08/D8738
FL-08/D8730/1
FL-08/D8739
FL-08/D8714/2-M25
FL-08/J200
FL-08/J200/304
FL-08/J300
FL-08/J300/304
FL-08/J400
FL-08/J400/304
FL-08/D8709/1
FL-08/D8709/2
FL-08/D8710/1
FL-08/D8710/2
FL-08/D8711/1
FL-08/D8711/2

Accessories for light fittings
Ceiling bracket, galvanisiert, 2 pcs
Ceiling bracket, stainless steel 304, 2 pcs
Ceiling bracket, pendant type 300mm, d=7mm
Ceiling bracket, pendant type, chain
Wall bracket, adjustable
Mounting bracket for oil derrick
Wall mounting bracket, pole type
Earth plate 2xM25
Clamp, d=42-45mm, 2 pcs
Clamp stainless steel 304, d=42-45mm, 2 pcs
Clamp, d=47-50mm, 2 pcs
Clamp stainless steel 304, d=47-50mm, 2 pcs
Clamp, d=59-62mm, 2 pcs
Clamp stainless steel 304, d=59-62mm, 2 pcs
Lamp pole wall type (1000x800mm) for 18W type
Lamp pole wall type (1000x800mm) for 36W type
Lamp pole fence type (2,5m) for 18W type
Lamp pole fence type (2,5m) for 36W type
Lamp pole flange type (3,0m) for 18W type
Lamp pole flange type (3,0m) for 36W type

6,30 €
15,60 €
12,50 €
12,50 €
37,60 €
84,40 €
62,50 €
21,50 €
6,30 €
15,70 €
7,90 €
19,40 €
9,40 €
23,40 €
74,80 €
74,80 €
99,70 €
99,70 €
109,10 €
109,10 €



KV M12 BM E 0XSS
KV M16 BM E SX1S
KV M20 BM E MX2S
KV M25 BM E XEU25S
KV M32 BM E XEU32S
KV M40 BM E XEU40S
KV M40 BM E X8S
KV M50 BM E X9S
KV M63 BM E X10S

KV M12 BM I 0XSS
KV M16 BM I SX1S
KV M20 BM I MX2S
KV M25 BM I XEU25S
KV M32 BM I XEU32S
KV M40 BM I XEU40S
KV M40 BM I X8S
KV M50 BM I X9S
KV M63 BM I X10S

Ex-e cable glands Polyamide, -60..+70°C, 7 Joule
black
M12x1,5 (4-6,5mm)
M16x1,5 (5-8mm)
M20x1,5 (7-13mm)
M25x1,5 (12-17mm)
M32x1,5 (16-21mm)
M40x1,5 (20-28mm)
M40x1,5 (23-32mm)
M50x1,5 (31-38mm)
M63x1,5 (35-44mm)
blue
M12x1,5 (4-6,5mm)
M16x1,5 (5-8mm)
M20x1,5 (7-13mm)
M25x1,5 (12-17mm)
M32x1,5 (16-21mm)
M40x1,5 (20-28mm)
M40x1,5 (23-32mm)
M50x1,5 (31-38mm)
M63x1,5 (35-44mm)

2,70 €
2,90 €
3,20 €
5,30 €
6,60 €
11,80 €
13,80 €
28,80 €
47,00 €

2,70 €
2,90 €
3,20 €
5,30 €
6,60 €
11,80 €
13,80 €
28,80 €
47,00 €

Picture price list Ex-products valid from 01.01.2025

Prices

Type number	Description	Prices	
	Blind plug, polyamide, black, -40..+70°C, 7 Joule		
KV M12 BM BV	M12	1,00 €	
KV M16 BM BV	M16	1,10 €	
KV M20 BM BV	M20	1,30 €	
KV M25 BM BV	M25	1,40 €	
KV M32 BM BV	M32	2,40 €	
KV M40 BM BV	M40	6,30 €	
KV M50 BM BV	M50	11,70 €	
KV M63 BM BV	M63	13,30 €	
	mushroom plug, polyamide, black, -40..+70°C, 7 Joule		
	M12	0,70 €	
KV M12 BM VP	M12	0,90 €	
KV M16 BM VP	M16	1,00 €	
KV M20 BM VP	M20	1,10 €	
KV M25 BM VP	M25	1,30 €	
KV M32 BM VP	M32	2,00 €	
KV M40 BM VP	M40	2,00 €	
KV M50 BM VP	M50	2,40 €	
KV M63 BM VP	M63	2,40 €	
	Ex-e cable glands, brass nickel plated, for non armoured cables		
	-40..+75°C, 7 Joule		
	KV M12 WI EMSKE	M12x1,5 (4-7mm)	8,50 €
	KV M16 WI EMSKE	M16x1,5 (5-10mm)	9,00 €
	KV M20 WI EMSKE	M20x1,5 (6-13mm)	11,30 €
	KV M25 WI EMSKE	M25x1,5 (10-17mm)	16,20 €
	KV M32 WI EMSKE	M32x1,5 (13-21mm)	22,00 €
	KV M40 WI EMSKE	M40x1,5 (16-28mm)	35,30 €
	KV M50 WI EMSKE	M50x1,5 (21-35mm)	56,20 €
	KV M63 WI EMSKE	M63x1,5 (34-48mm)	101,00 €
	-60..+75°C, 7 Joule		
	KV M12 WI EMSKE LT	M12x1,5 (4-7mm)	10,10 €
	KV M16 WI EMSKE LT	M16x1,5 (5-10mm)	10,50 €
	KV M20 WI EMSKE LT	M20x1,5 (6-13mm)	13,60 €
	KV M25 WI EMSKE LT	M25x1,5 (10-17mm)	18,90 €
	KV M32 WI EMSKE LT	M32x1,5 (13-21mm)	25,10 €
	KV M40 WI EMSKE LT	M40x1,5 (16-28mm)	40,10 €
	KV M50 WI EMSKE LT	M50x1,5 (21-35mm)	63,50 €
	KV M63 WI EMSKE LT	M63x1,5 (34-48mm)	109,10 €
	Blind plug, nickel-plated brass, -40..+75°C, 7 Joule		
	KV M12 WI BV EX-EMVS	M12	3,70 €
	KV M16 WI BV EX-EMVS	M16	4,10 €
	KV M20 WI BV EX-EMVS	M20	4,40 €
	KV M25 WI BV EX-EMVS	M25	5,60 €
	KV M32 WI BV EX-EMVS	M32	8,50 €
	KV M40 WI BV EX-EMVS	M40	10,00 €
	KV M50 WI BV EX-EMVS	M50	15,70 €
	KV M63 WI BV EX-EMVS	M63	34,00 €
	Mushroom plug, polyamide, red, -40..+100°C, 7 Joule		
	KV M12 WI VP 6	M12	0,70 €
	KV M16 WI VP 9	M16	0,90 €
	KV M20 WI VP 13	M20	1,00 €
	KV M25 WI VP 17	M25	1,10 €
	KV M32 WI VP 21	M32	1,30 €
	KV M40 WI VP 28	M40	2,00 €
	KV M50 WI VP 35	M50	2,00 €
	KV M63 WI VP 48	M63	2,40 €

Picture price list Ex-products valid from 01.01.2025

Prices

Type number

Description



KV M20 CM 20S16 A2F 5
KV M20 CM 20S A2F 5
KV M20 CM 20 A2F 5
KV M25 CM 25 A2F 5
KV M32 CM 32 A2F 5
KV M40 CM 40 A2F 5
KV M50 CM 50S A2F 5
KV M50 CM 50 A2F 5
KV M63 CM 63S A2F 5
KV M63 CM 63 A2F 5

Ex-de cable glands, brass nickel plated, for non armoured cables	
-60..+130°C, 20 Joule	
M20x1,5 (3,2-8,7mm)	11,10 €
M20x1,5 (6,1-11,7mm)	12,00 €
M20x1,5 (6,5-14mm)	14,10 €
M25x1,5 (11,1-20mm)	27,50 €
M32x1,5 (17-26,3mm)	40,40 €
M40x1,5 (23,5-32,2mm)	65,70 €
M50x1,5 (31-38,2mm)	80,30 €
M50x1,5 (35,6-44mm)	84,80 €
M63x1,5 (41,5-49,9mm)	126,80 €
M63x1,5 (47,2-55,9mm)	146,10 €



KV M20 CM 20S16 E1FX5
KV M20 CM 20S E1FX 5
KV M20 CM 20 E1FX 5
KV M25 CM 25S E1FX 5
KV M25 CM 25 E1FX 5
KV M32 CM 32 E1FX 5
KV M40 CM 40 E1FX 5
KV M50 CM 50S E1FX 5
KV M50 CM 50 E1FX 5
KV M63 CM 63S E1FX 5
KV M63 CM 63 E1FX 5

Ex-de cable glands, brass nickel plated, for armoured cables	
-60..+130°C, 20 Joule	
M20x1,5 (L:3,1-8,6mm / A:6,1-13,1mm)	25,90 €
M20x1,5 (L:6,1-11,6mm / A:9,5-15,9mm)	25,90 €
M20x1,5 (L: 6,5-13,9mm / A:12,5-20,9mm)	42,40 €
M25x1,5 (L:11,1-19,9mm / A:14-22mm)	52,50 €
M25x1,5 (L:11,1-19,9mm / A:18,2-26,2mm)	56,40 €
M32x1,5 (L:17-26,2mm / A:23,7-33,9mm)	101,90 €
M40x1,5 (L:22-32,1mm / A:27,9-40,4mm)	149,20 €
M50x1,5 (L:29,5-38,1mm / A:35,2-46,7mm)	169,90 €
M50x1,5 (L: 35,6-44mm / A:40,4-53mm)	269,70 €
M63x1,5 (L:40,1-49,9mm / A:45,6-59,4mm)	330,40 €
M63x1,5 (L:47,2-55,9mm / A:54,6-65,8mm)	386,60 €